

Name: _____

Period: _____

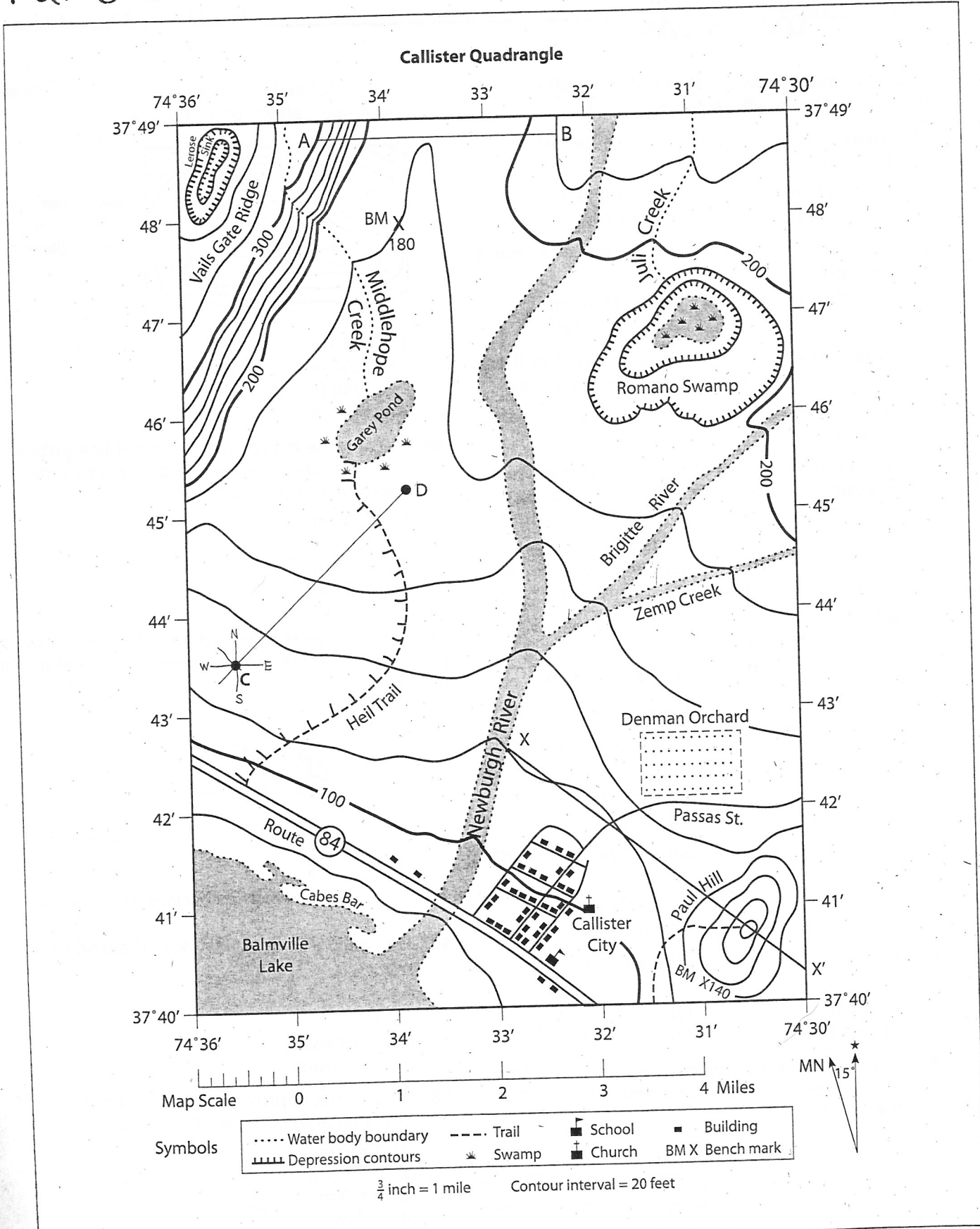


Figure 2-8. A sample topographic (contour) map

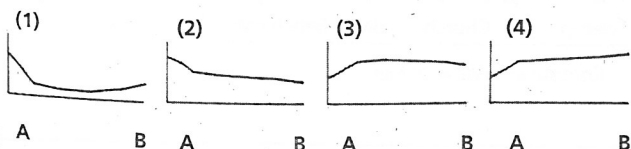
Use map above to answer Q15 (35-41)
On back

Review Questions

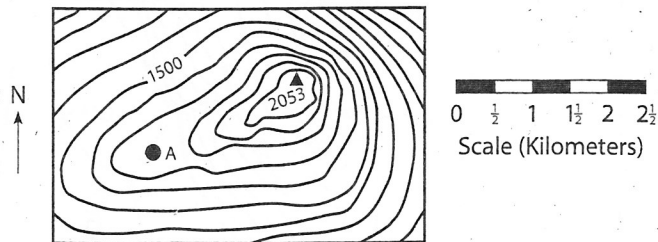
Complete All

Base your answers to questions 35 through 44 on the map in Figure 2-8. *(front page)*

35. What is the maximum altitude of Denman Orchard?
 (1) 140 feet (3) 159 feet
 (2) 150 feet (4) 161 feet
36. What is the longitude of the middle of Romano Swamp?
 (1) 37°47' North (3) 74°31' North
 (2) 37°47' West (4) 74°31' West
37. What is the distance from Passas Street at the margin of the map to where it meets Route 84?
 (1) 2½ miles (3) 3½ miles
 (2) 3 miles (4) 4 miles
38. What is the gradient of the Brigitte River from the 200-foot contour line to the contour line before the Brigitte River meets the Newburgh River?
 (1) 5 to 10 feet/mile (3) 25 to 30 feet/mile
 (2) 15 to 20 feet/mile (4) 35 to 40 feet/mile
39. What is the latitude of the church?
 (1) 74°32' North (3) 37°41' West
 (2) 74°32' West (4) 37°41' North
40. Where is the steepest slope located on the map?
41. The biggest area of gentle slopes is found in the vicinity of
 (1) Garey Pond (3) Paul Hill
 (2) Denman Orchard (4) Zemp Creek
42. Which direction is Vails Gate Ridge from Callister City?
 (1) north (3) northeast
 (2) northwest (4) west
43. Toward what direction is the Brigitte River flowing?
 (1) south (3) north
 (2) southwest (4) northeast
44. Which of the following profiles represents the shape of the landscape between A and B on the map?

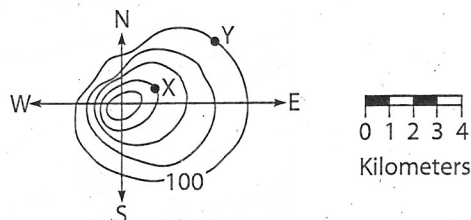


45. On the following topographic map, what is the most likely elevation of point A?



- (1) 1250 m
 (2) 1650 m
 (3) 1750 m
 (4) 1850 m
46. What is the approximate straight-line distance from Mt. Marcy in the Adirondacks to Slide Mountain in the Catskills?
 (1) 120 km
 (2) 150 km
 (3) 205 km
 (4) 235 km

Base your answers to questions 47 and 48 on the following diagram, which represents a topographic map of a hill.



Contour interval=10 meters

47. On which side of the hill does the land have the steepest slope?
 (1) east
 (2) south
 (3) northeast
 (4) northwest
48. What is the approximate gradient of the hill between points X and Y?
 (1) 1 m/km
 (2) 10 m/km
 (3) 3 m/km
 (4) m/km